

“PLAY TO”

From Windows you can use the **PLAY TO** functionality from Windows Media Player 11 or 12 or from Windows explorer.

HOW TO >

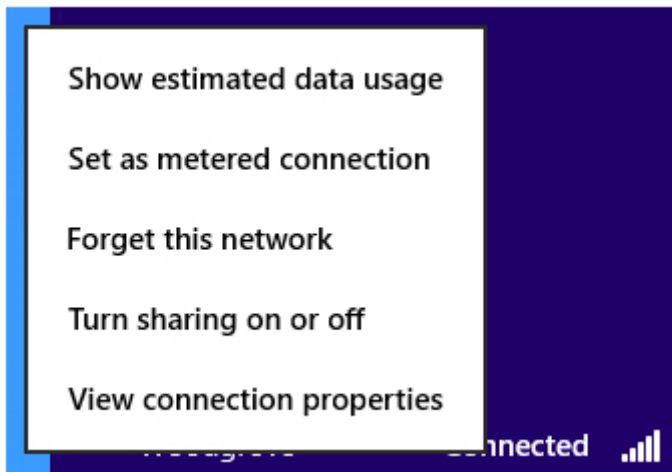
Right click you music and select **PLAY TO**.

If your PC is configured correctly you can find your Libratone speaker in the **PLAY TO** list.

TROUBLESHOOT >

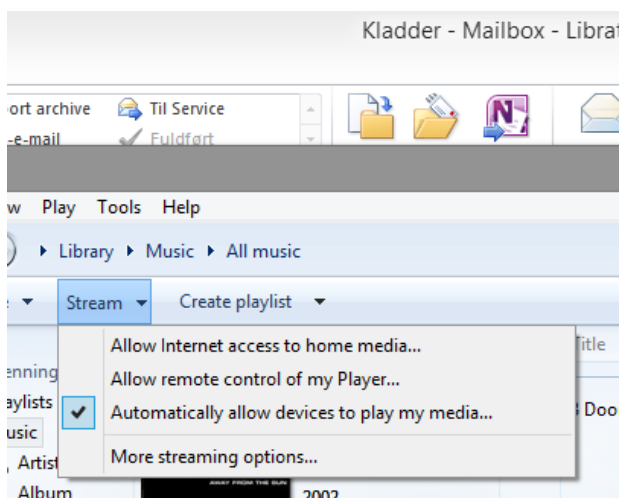
Please check these settings:

1. Ensure that Sharing is set to on.
Press and hold or right-click the network you're connected to, and then tap or click **Turn sharing on or off**



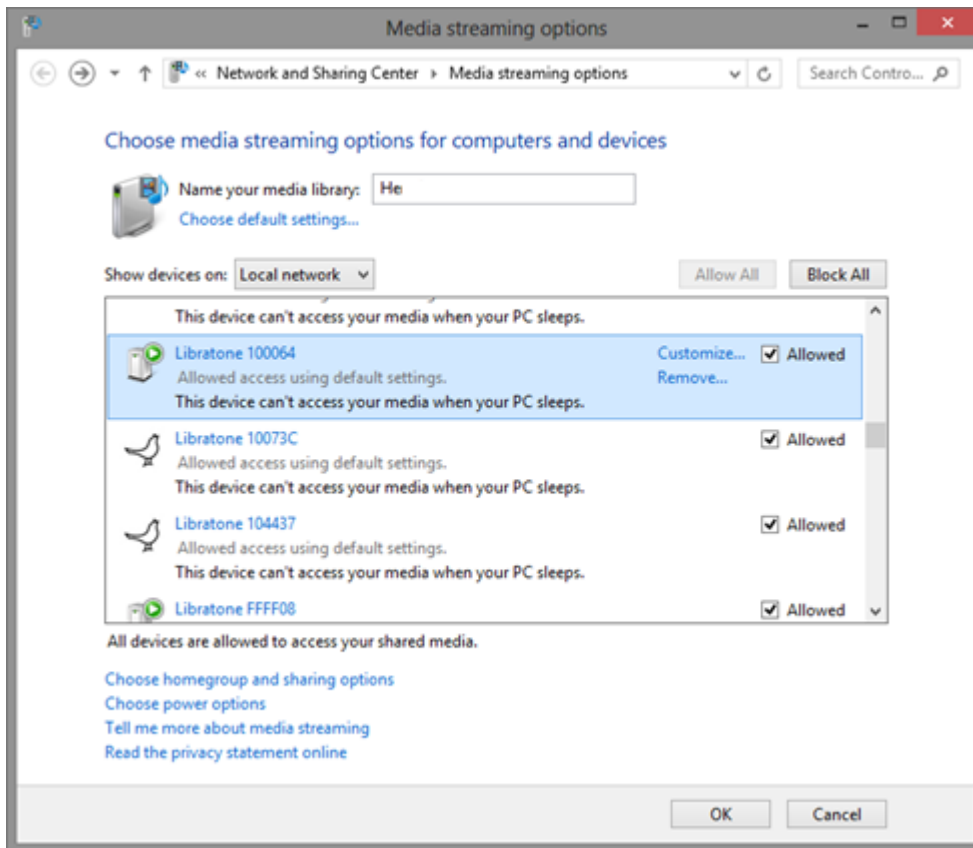
Start Windows Media Player 11 / 12.

Click Stream and that "Automatically allow devices to play my media ..." is checked.

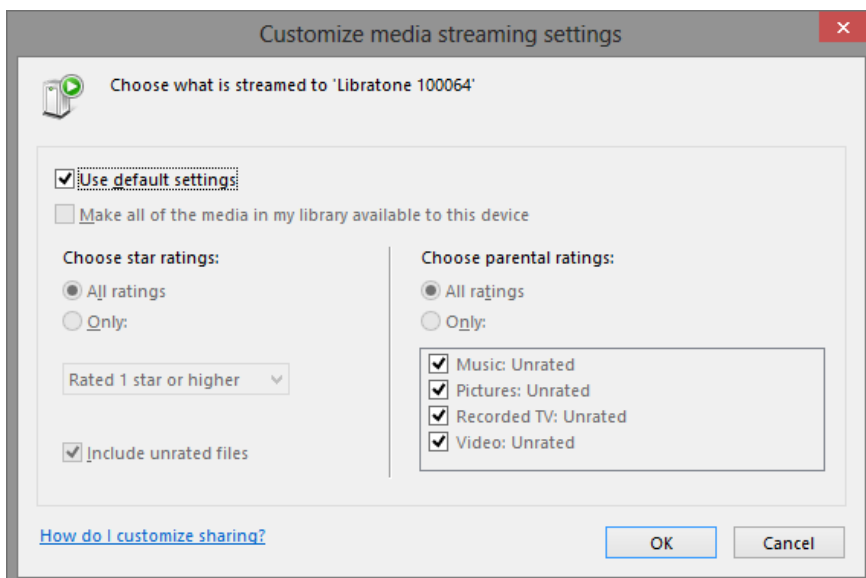


Click More streaming options in the Stream menu.

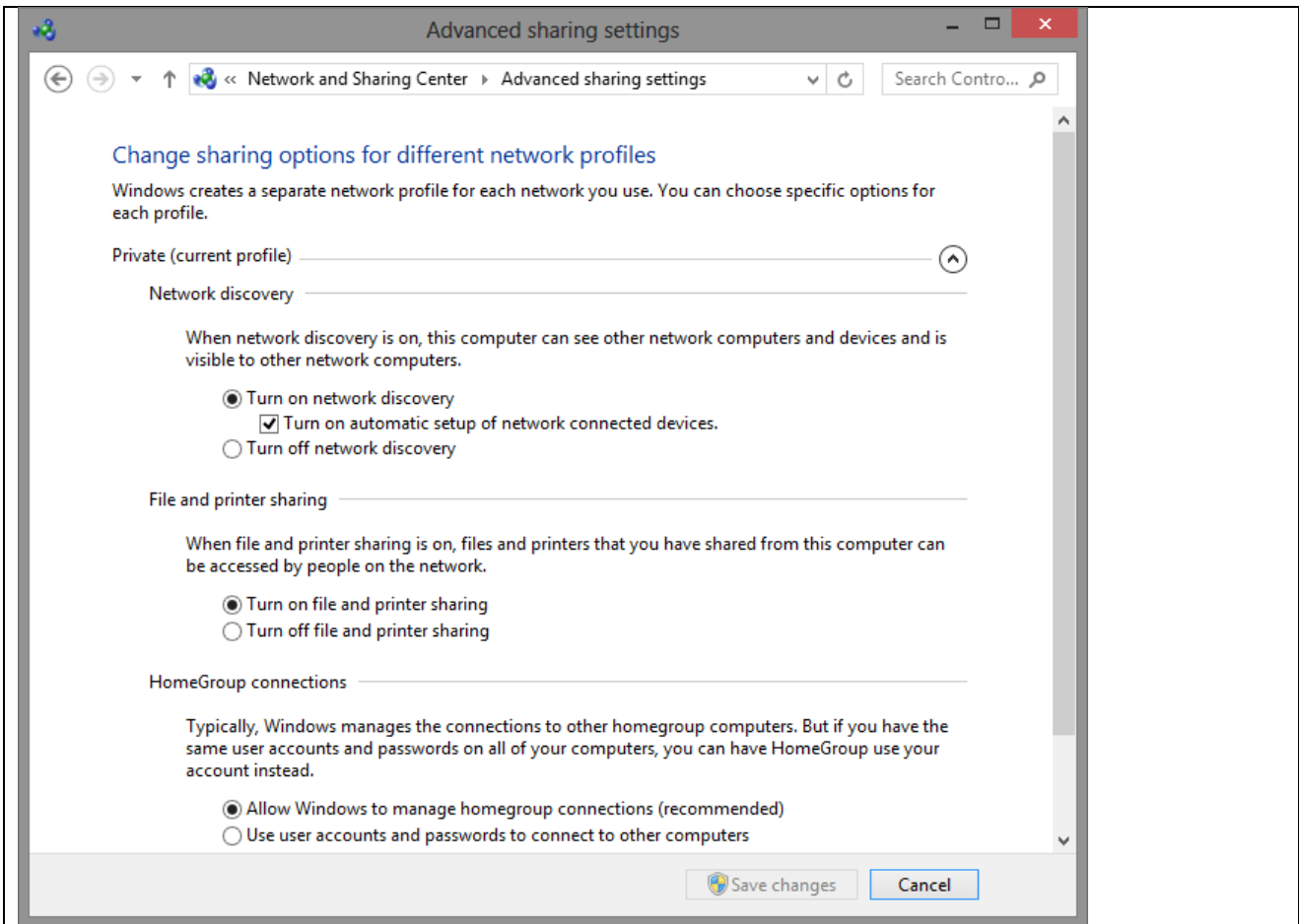
Ensure that your speaker is appearing on the list and that the speaker is checked and status is Allowed.



Click Customize and check settings:



Click OK and "Chose homegroup and sharing options". Should look like this:



After ensuring that all settings are set as shown above – please restart computer.

If it's still not working – please temporarily disable the firewall and test PLAY TO.
Remember to enable the firewall again after the test.